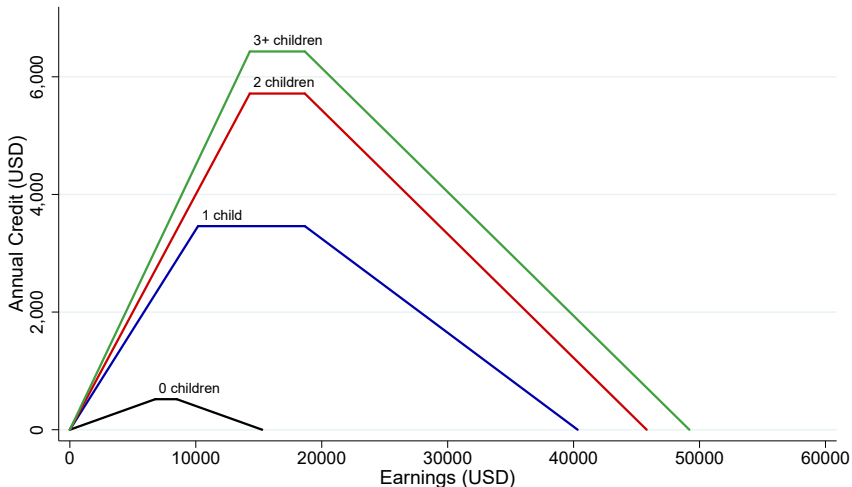


The EITC and the Extensive Margin: A Reappraisal

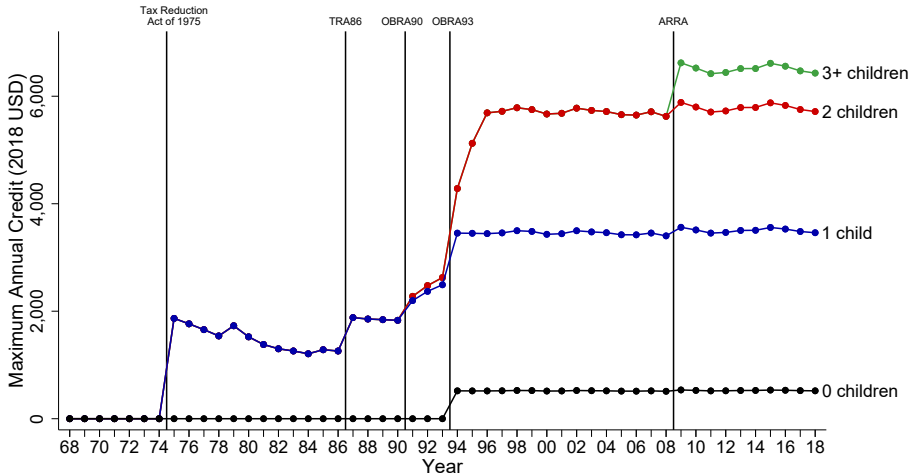
Henrik Kleven
Princeton University and NBER

December 2023

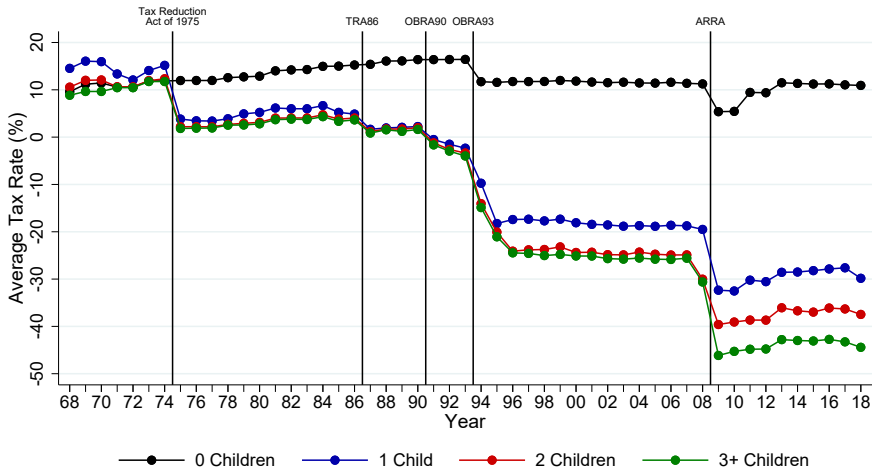
EITC Schedule in 2018



EITC Maximum Credit Over Time



Average Tax Rates on Single Women Over Time



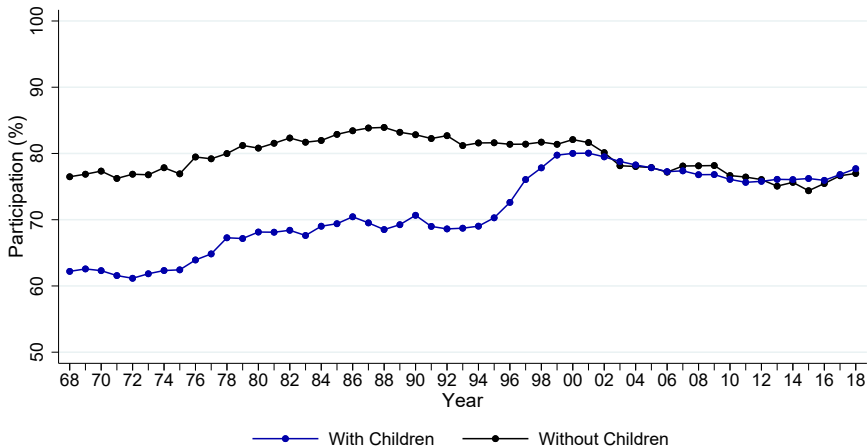
Contribution

- ▶ Large literature on extensive margin responses to the EITC
 - ▶ A consensus that effects were large on single mothers
- ▶ I reappraise the effects of the EITC on single mothers
- ▶ What's new?
 - ▶ Long-run perspective
 - ▶ Analysis of all state and federal reforms
 - ▶ Event study approach applied to all reforms
 - ▶ New analysis of confounders
 - ▶ Analysis of model uncertainty

The EITC and the Extensive Margin: The Long View

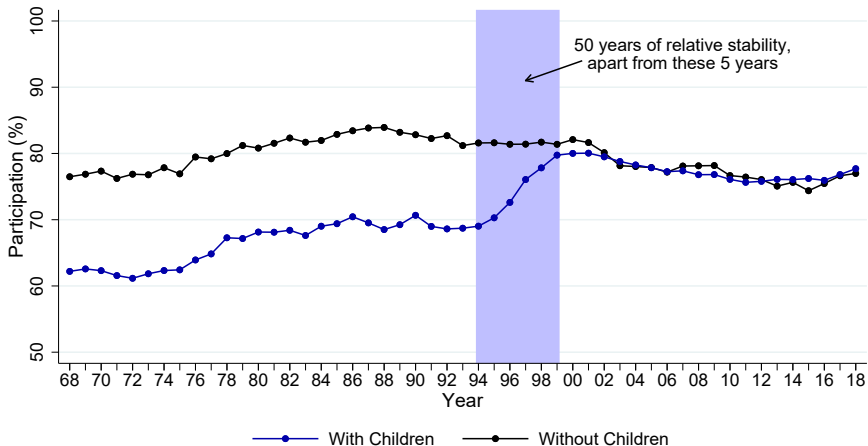
Labor Force Participation of Single Women

With and Without Children



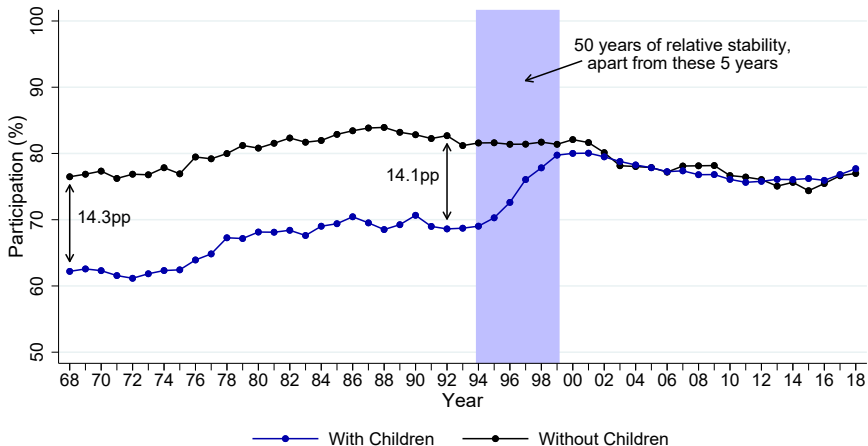
Labor Force Participation of Single Women

With and Without Children



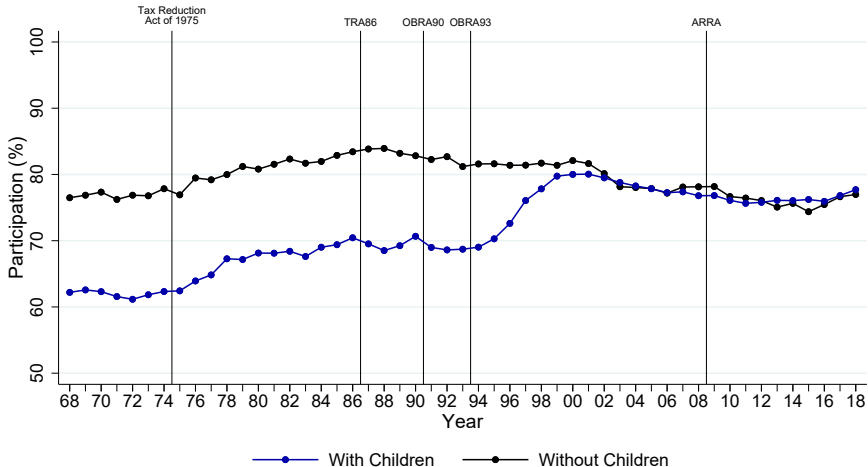
Labor Force Participation of Single Women

With and Without Children



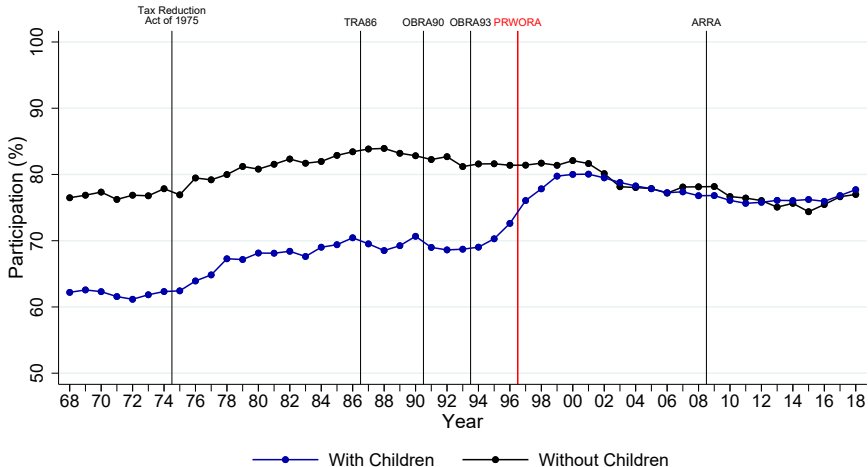
Labor Force Participation of Single Women

With and Without Children



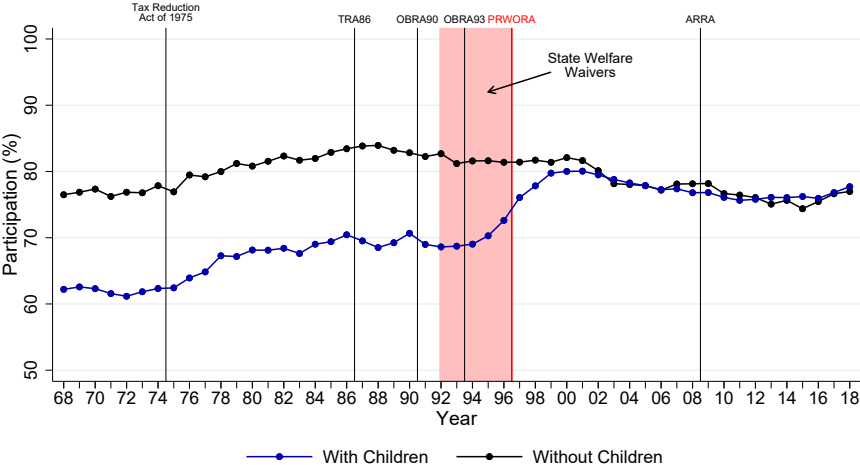
Labor Force Participation of Single Women

With and Without Children



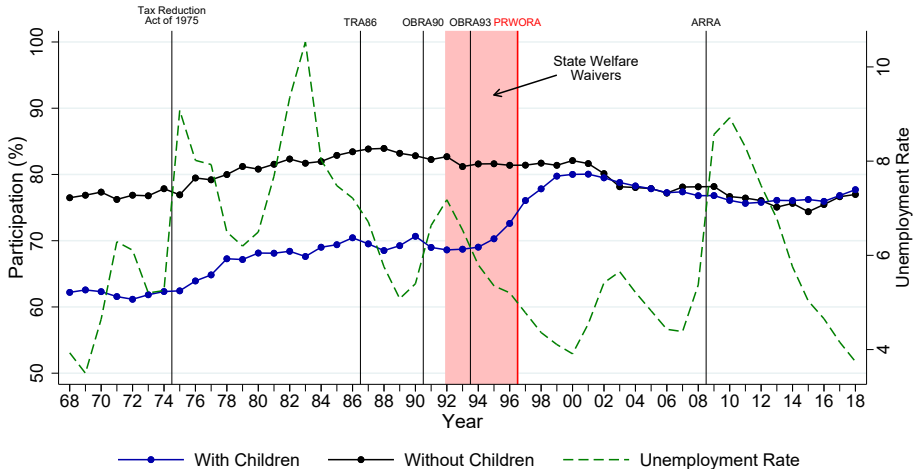
Labor Force Participation of Single Women

With and Without Children



Labor Force Participation of Single Women

With and Without Children

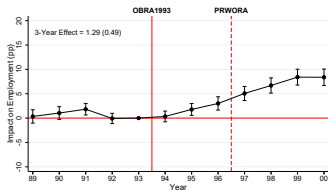


The EITC and the Extensive Margin: Event Studies

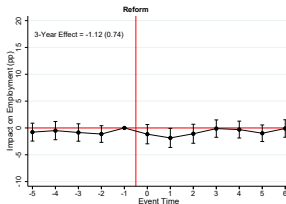
Event Studies of EITC Reforms

All Single Mothers

1993 Reform

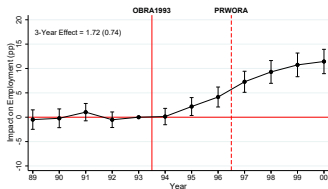


All Other Reforms

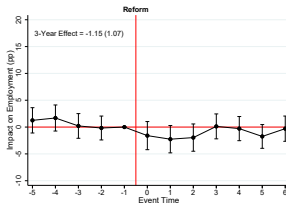


Bottom Half of Predicted Earnings

1993 Reform



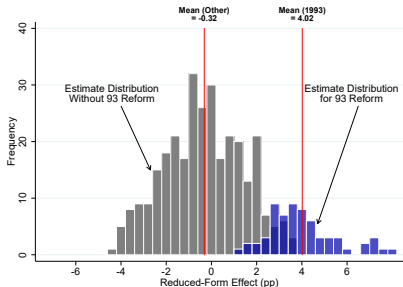
All Other Reforms



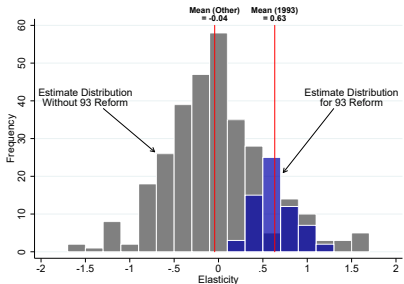
Model Uncertainty

Implications of Specification Choice

Distribution of Reduced-Form Effects



Distribution of Elasticities

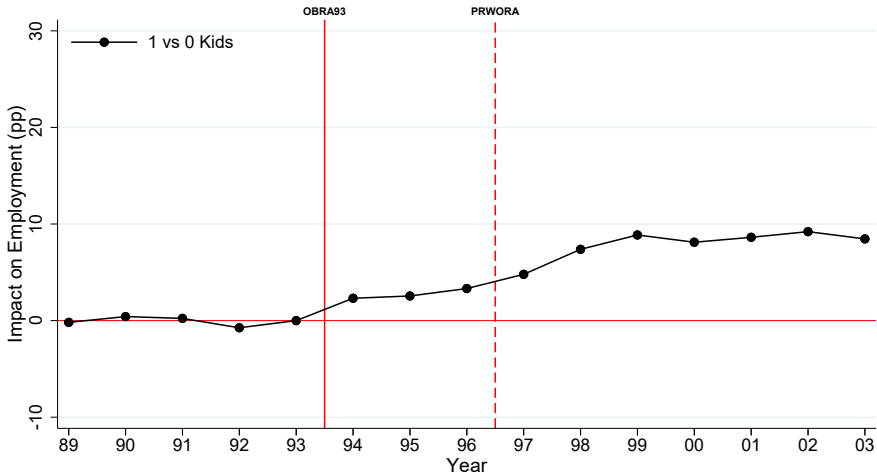


The EITC and the Extensive Margin: Dissecting the 1990s

The EITC and the Extensive Margin: Effects by Number of Children

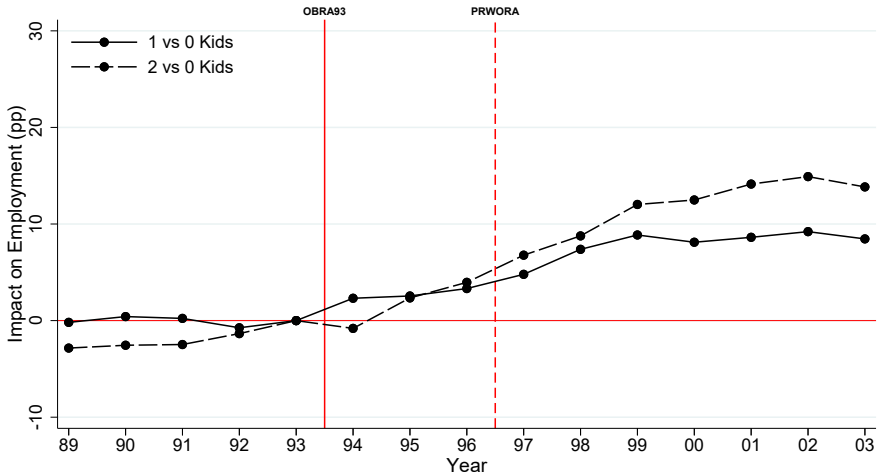
DiD by Number of Children

Weekly Employment



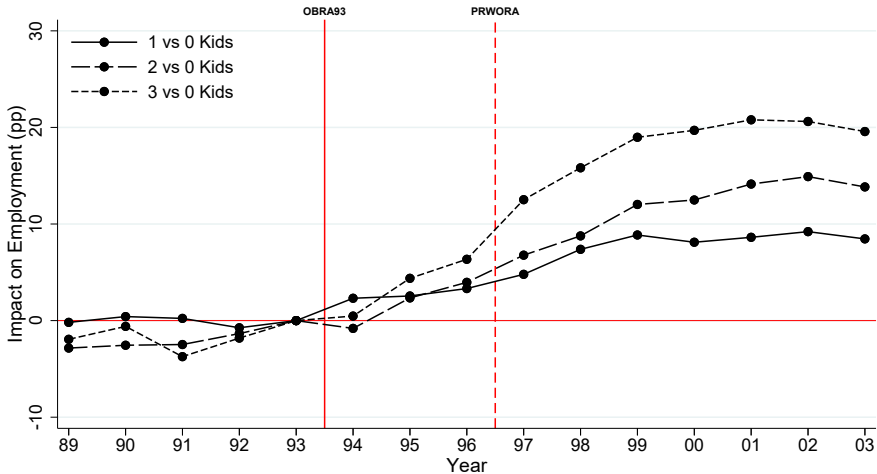
DiD by Number of Children

Weekly Employment



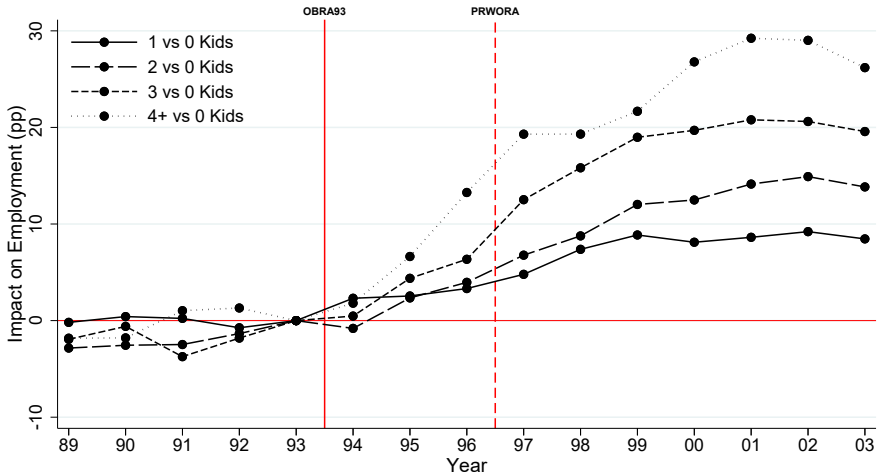
DiD by Number of Children

Weekly Employment



DiD by Number of Children

Weekly Employment



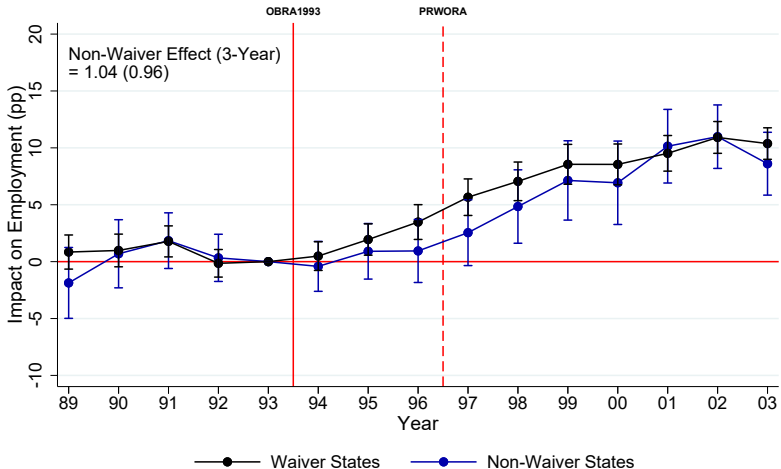
The EITC and the Extensive Margin: Effect of Welfare Waivers

Waiver vs Non-Waiver States

- ▶ Waiver types: time limits, work requirements, family caps, JOBS exemptions, JOBS sanctions, and earnings disregards
- ▶ 38 states approved statewide welfare waiver legislation between 1992-96
- ▶ States without statewide waiver legislation:
 - ▶ Alabama, Alaska, District of Columbia, Kansas, Kentucky, Louisiana, Nevada, New Mexico, New York, Oklahoma, Pennsylvania, Rhode Island, and Wyoming
- ▶ Run DiD event studies separately for waiver and non-waiver states

Waiver vs Non-Waiver States

Weekly Employment, All Single Women



Conclusions

Conclusions

- ▶ The empirical research that underpins the consensus view on the EITC and the extensive margin is fragile
- ▶ While I do not find any clear evidence of short-run effects, the program may have had more gradual, long-run effects
 1. Optimization frictions
 2. Dynamic responses
- ▶ Still, the argument for gradual, long-run effects does not fit easily with the long-run descriptive patterns